

Fighting **BIG BOTANY!**

Excerpted From:

The Secret Sex Life Of A Leaf

Ned Ander-Thal, Ph.D.

World Headline News Science-ish Books © 2024. All Rights Reserved.



www.thewhn.ca

Ned Ander-Thal

- Scientist
- Editor
- Semi-Human
- Devilishly Handsome



While Dr. Ander-Thal has spent significant effort, money and time studying ***snow mulching*** to improve spring flower yield, his primary research interest is in the ***SEX LIFE OF THE LEAF.***

In his recent book on the topic (***The Secret Sex Life of A Leaf***) Dr. Ander-Thal has attempted to defeat BIG BOTANY and set the scientific community right on the ***invertebrate leaf!*** With permission of the publisher, excerpts of ***The Secret Sex Life of A Leaf*** are reproduced here.

These new scientific FACTS are sure to SHOCK and ASTOUND you!

CHAPTER 1: What '**BIG BOTANY**' Doesn't Want You To Know

'**BIG BOTANY**' has subverted science for centuries. The '*botanical fraud*' on humanity was started in 463 CE by **Pope Hilarius** (or **Hilary**; coincidence, I think NOT) who was **Bishop of Rome** from 461-468 CE. Born in Sardinia (hence, close to Scilly and the newly emerging Mafia!), Pope Hilary was reported to be overly indulgent of an unpopular drink of the time called '*vino*' (or wine). *Vino* was unpopular because the citizens of Rome knew that its production was dependent on grape bushes that were infested with a slimy creature (the invertebrate *Leaf vino*). Consequently, **BIG VINO**, a collective of grape producers, was on the verge of economic collapse as people switched to other pleasure drinks (fermented goat milk was all the rage). Historical records suggest that **BIG VINO** (Headquartered in Sicily) slipped Pope Hilary a rather large 'donation' and promised a lifetime supply of Sacramental Wine for his personal pleasure in exchange for: 1) the Pope declaring that God told him that leaves were actually part of the grape plants, and not some disgusting invertebrate; and 2) that *vino* was the blood of Christ thus assuring large, and highly profitable, communion orders to **BIG VINO**. On an historical side note, Pope Hilary died of liver failure in 468 CE. Despite his demise, **BIG VINO** future was bright as subsequent Popes continued the lie, and a few, apparently under the influence of the '*vino*', were actually married (e.g., Popes Hormisdas, 514-523; Adrian II, 867-872; John XVII, 1003; Clement IV, 1265-1268).

Since then, **BIG BOTANY**, the successor to **BIG VINO**, has fooled the world's population into thinking that apples, oranges, kiwi, bananas, blueberries and even avocados are derived solely from trees and shrubs. Thanks to **BIG BOTANY's** indoctrination, even today, if a person finds an immature leaf (referred to ironically as a 'worm' - the single most dangerous predator of the leaf) in an apple, they will discard the apple in disgust. **BIG BOTANY** can not afford to have the **TRUTH** come out.

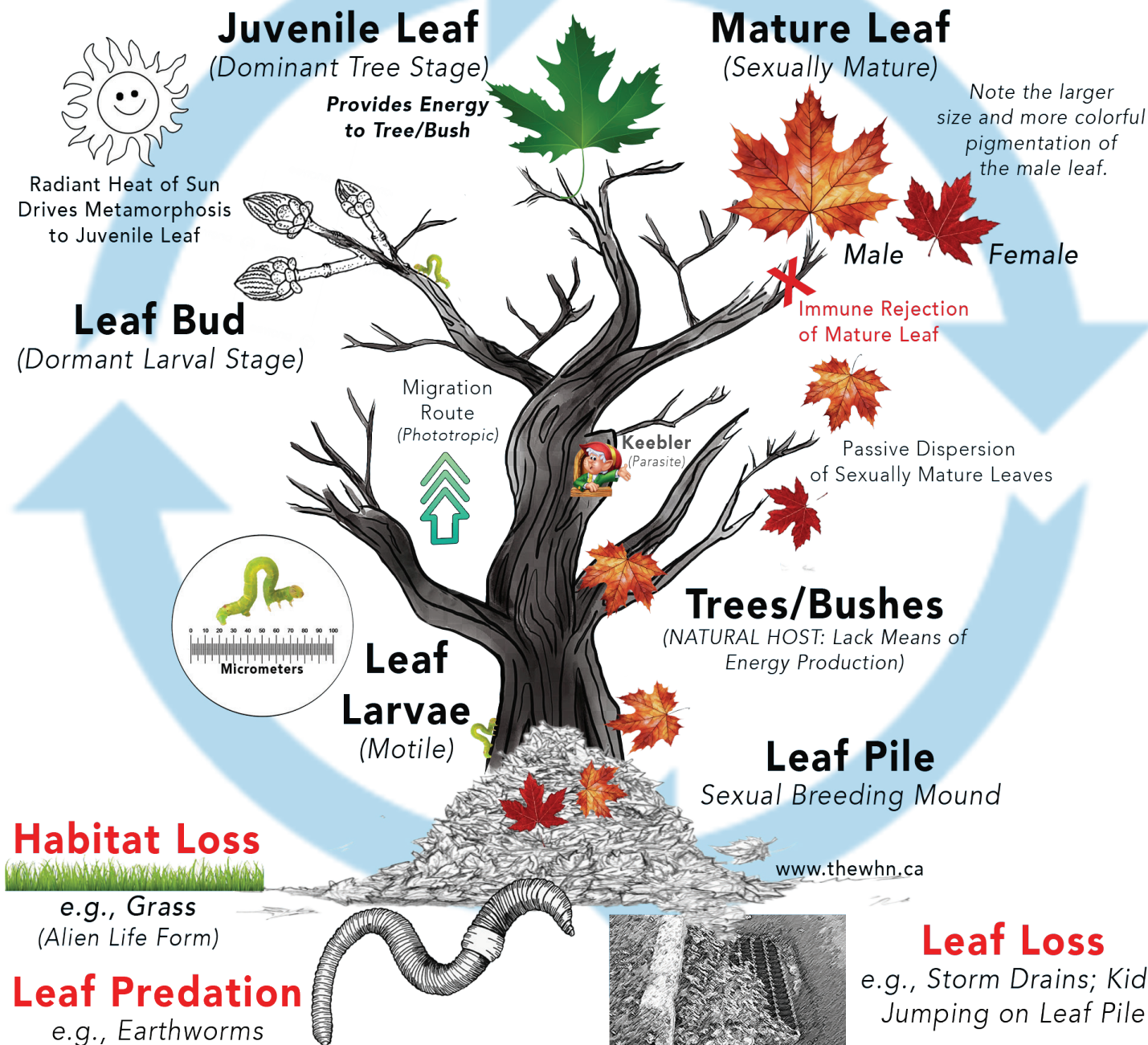
CHAPTER 2: The Life Cycle of the Leaf

While not commonly known to the average citizen (or even the average Ph.D.!) the '**leaf**' is not part of a plant but rather is a **symbiotic invertebrate** that provides energy to the genera **Tree sp.** and **Bush sp.** Through diligent research Dr. Ander-Thal's team has finally documented the lifecycle (see schematic) of this under appreciated (and unbelievable) invertebrate (**Leaf sp.**). As diagramed, when leaves fall to earth every autumn it begins the sexual phase of the 'leaf' breeding cycle. Similar to salmon spawning, the mature male and female leaves (YES, there are at least

Dr. Ned Ander-Thal's Lifecycle of The Leaf



FROM: *The Secret Sex Life Of A Leaf*



Key Schematic from *The Secret Sex Life Of A Leaf*
Ned Ander-Thal, Ph.D. World Headline News Science-ish Books © 2024.
All Rights Reserved.

two genders; see diagram) migrate to the breeding grounds which is referred to as a **Leaf Pile**. Following a breeding frenzy, scientifically termed as an '**orgy**', the female leaf lay her eggs which hatch in late fall. In a race against winter's cold temperature, the motile **bud larvae** climb back up the nearest species specific tree/bush. Importantly, there is a very strong **Tree/Bush** species specificity amongst **Leaf sp.** which results in a species of Tree/Bush hosting only specific Leaf species. The motile larval buds are phototropic and climb up the host where they soon attach to the host's bare branches in late autumn/early winter where the now **dormant larvae** overwinter in their '**bud form**'. As the season changes from winter to spring, the radiant heat of the sun triggers the '**bud form**' to metamorph into the juvenile '**leaf form**' of the invertebrate. This change is crucial as it is key to the symbiotic relationship between the **Leaf sp.** and the various **Tree sp.** and **Bush sp.** that serves as its home as ONLY the **Juvenile Leaf** is of value to the tree/ bush host.

In contrast to what most (*i.e.*, all) botanical research states, it is clear, based on our research, that trees and bushes long ago lost their ability to produce metabolic energy. Rather, just like the eukaryotic mitochondria, trees/bushes became dependent on the energy production of the symbiotic **invertebrate leaf**. Indeed, a symbiotic relationship between **Leaf sp.** and the Tree/Bush genera developed in which trees/bushes have become 100% dependent of the leaf migration cycle to remain alive and reproduce as they gain energy from their symbiotic **Juvenile Leaves**. The symbiotic **Leaf sp.** meanwhile receive a protected habitat from leaf predators (such as the ravenous earthworm; a mortal enemy during the breeding phase). As the season passes, the **Juvenile Leaf** transforms into the sexually reproductive **Mature Leaf**. and ceases to provide energy to the tree. This triggers an immunological rejection response by the tree/bush which results in the shedding of the mature Leaf where they form the breeding mound (*i.e.*, **Leaf Pile**) to once again begin the cycle.

The impact of civilization has been felt by the *Leaf sp.* Evolutionarily, Leaf sp. had to contend with massive larval losses to the dreaded earthworm. However, as humans evolved, the loss of larval leaves to earthworms has been outstripped by losses due to children jumping into leaf piles and disrupting the reproductive act ("Honey, not in front of the kids!") as well as rain gutters, cars and storm drains. Indeed, in large cities, the observed loss of trees and bushes has been directly tied to disruption of the **Leaf Life Cycle** (see schematic).

CHAPTER 7: EXOTICA and the Leaf

While modern '*botanists*' have failed to disclose the invertebrate leaf, the classical arts have long understood the inherent sensual nature of the Leaf. Biologically speaking (from the Leaf perspective) the sexiest leaf is **Leaf fig** (*i.e.*, commonly called the Fig leaf). If one carefully examines classical painting and sculpture, one can see that the **Leaf fig** is used to denote the overt sexuality of humans (photo)!

This correlation has been memorialized at the **Museum of Modern Art** at **Ander-Thal University** where they paired the SEXIEST LEAF sculpture ever made with SEXIEST MAN ALIVE. Honored, it was clear that the former President Trump was enamored with the sculpture stating: "*Some of the smoothes curves I've ever fondled.... I hope this 'caress' doesn't lead to another \$83,000,000 judgement against me!*"

See, the fig leaf **is** SEXIER than the man

CHAPTER 13: Grasses are NOT Native to this Planet!

In classes at Ander-Thal University, students often ask about genera **Grass sp.** (class 'Grasses'). Our research has definitively concluded that **Grass sp.** DON'T HAVE INVERTEBRATE LEAVES! Perhaps the clearest indication of the alien nature of grasses is the lack of earthworm predation. Grasses live in close proximity to earthworms yet manage to flourish. Moreover, our research has demonstrated that grasses are an alien species that we humans must endeavor to keep in check via active predations (*e.g.*, cows, goats, sheep) or, when those are absent, through weapons of mass destruction (*e.g.*, mowing). Indeed, the presence of grasses typically results in the loss of

MUSEUM OF MODERN ART
ANDER-THAL UNIVERSITY, S. SURREY, B.C., CANADA

THE SEXIEST LEAF
Meets
THE SEXIEST MAN

"I LOVE
Caressing
Great Art!"

DONALD TRUMP
FEB. 2, 2024



WHN EXCLUSIVE: Donald Trump closely '*inspects*' **The God of Ianuarius 6**. Sculpted by Nediculus Anderthulcus circa 466 CE. Note the sculptor's use of the highly sensual **fig leaf** along with an olive leaf laurel. Permanent exhibit: Ander-Thal University.
From: **The Secret Sex Life of the Leaf** © 2024

habitat for **Tree sp.** and **Bush sp.** as noted in suburbs everywhere. Indeed, in most geographical areas, mowing is the **ONLY** way to keep the alien grasses under control!

BIG BOTANY Mandated

LEGAL



NOTES

DISCLAIMER #1:

Dr. Ander-Thal's book has been unfortunately banned [Obviously by **BIG BOTANY!**] worldwide - with the **notable exceptions** of **Florida** and **Texas** where age-appropriate (leaf orgy section excluded) versions have been adopted as the primary plant science textbook for grades K-12 and all state funded colleges, universities and insane asylums. In Florida, Governor DeSantis has further demanded that **Disney World** incorporate Dr. Ander-Thal's findings into the 'Jungle Cruise' amusement ride and has appointed Dr. Ander-Thal as the state's **Agricultural Chief**.

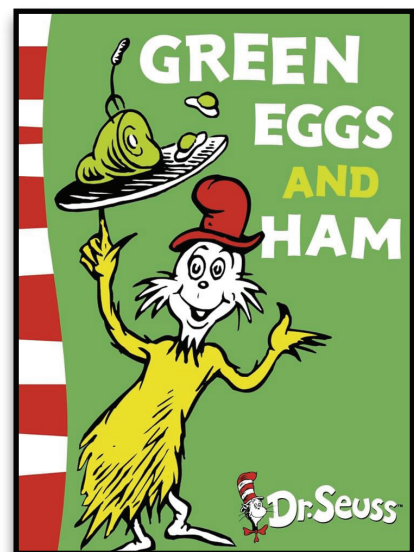
DISCLAIMER #2:

Helping Ned Keep His New Year's Resolution:

"I'll mow the lawn once a month no matter what..."

Bizarrely, some people doubt Ned's horticultural wisdom, including Mrs. Ander-Thal. Per Mrs. Ander-Thal, "*Ned's a horticultural and botanical dummy. He may have a Ph.D., but it definitely stands for 'Piled Higher and Deeper'.*" Mrs. Ander-Thal states that Ned's knowledge of plants is limited to categorizing green things as being: "1) **Tree**; 2) **Shrub**; or possibly 3) **'grass'** - which he believes to be an alien life form. There are no such things as vegetables in Ned's world."

According to Mrs. Ander-Thal, to get Ned to eat a vegetable or a salad, she has to claim it is **Green Eggs and Ham**: "*Ned has always assumed that Dr. Seuss's book was a cookbook.*" Per Mrs. Ander-Thal, "*In public, I'm embarrassed every time Ned sees a nice leaf in the street gutter ("Ohh, look at that sexy leaf!") and he 'rescues it' so that it can mate and produce beautiful offspring.... But I don't discourage Ned from snow mulching as I made it part of his New Year Resolutions. He has promised to mow the lawn at least once a month to defeat the aliens (i.e., grasses) and if he gets out of the habit in January - March, the lawn won't get mowed in the summer or fall. Sigh, the things I have to deal with...*"



NED'S FAVORITE "COOKBOOK"
OR ANY BOOK PERIOD...